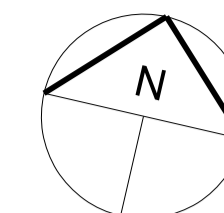


THIS DRAWING IS TO BE READ  
IN CONJUNCTION WITH TD5979  
0100 - 6000 series & ALL OTHER  
CONSULTANTS DRAWINGS

FOR ADDITIONAL SPECIFICATION  
NOTES PLEASE REFER TO NBS  
DOCUMENT



**GENERAL**

No dimensions to be scaled from this drawing.  
All given dimensions in millimeters. All dimensions  
to be checked by contractor prior to  
commencement of work on site.

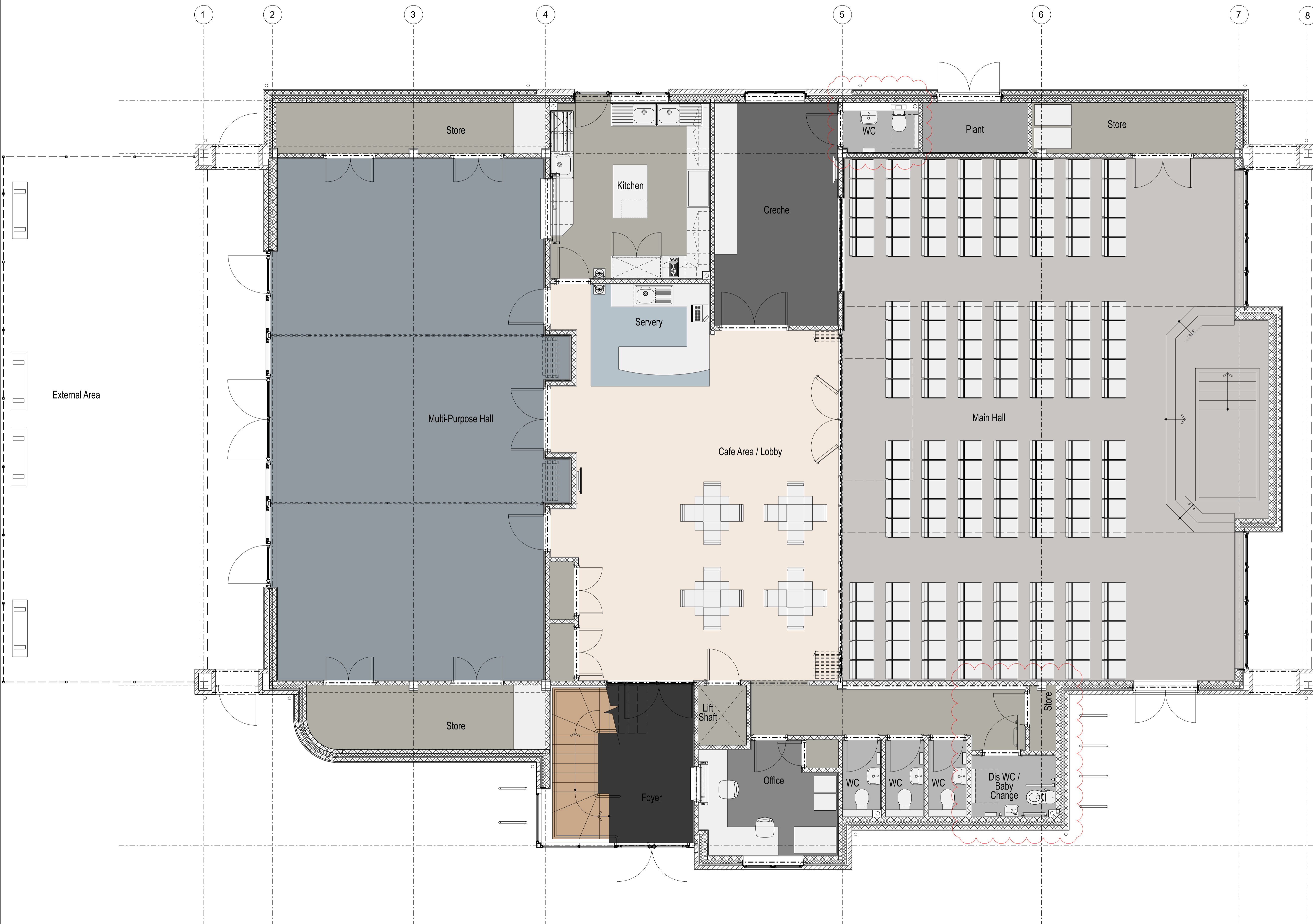
All dimensions shown are from face of block to  
face of block, from face of partition to face of  
partition or from structural grid line to face of  
block or partition & NOT from plastered or dry  
lined finishes

All materials, goods and fittings to be used in  
strict accordance with the manufacturers  
instructions and recommendations.

All new structural steelwork & lintels to conform to  
structural engineers specification and  
detailing.

All new foundations and floor slab to be as  
engineers specification and detailing.

This drawing to be read in conjunction with  
structural general arrangement details and all  
other consultants drawings.



T2	TENDER ISSUE Creche WC made longer and layout amended. Corridor, Accessible WC and Storage Cupboard amended to improve WC access, approach and layout	AP	12.03.21
T1	TENDER ISSUE Multi-Purpose Hall folding wall omitted from tender. Lift omitted. External wall along gridlines A and B squared off and brought in to gridlines. Plant room added. Slip in facade between gridlines 4 and 5 along gridline A (between tender and brickwork) omitted. Inside of store cupboards to be fairface block, not plasterboard. Main Hall Store doors amended from sliding timber doors to timber swing doors	AP	05.02.21

No	Amendments	Prep	Date

Do not scale this drawing  
All given dimensions are in millimetres  
Architect to be notified of discrepancies in figured dimensions  
Contractors must check all dimensions from site  
This drawing is copyright and is for use on this site only

Project  
**Emmanuel Church  
Leftwich**

Title  
**Proposed GA  
Ground Floor Plan**

Job No. 5979      Drawing No. TD.A.2001  
Amendment: Scale @A1: 1:50

T1	T2				
----	----	--	--	--	--

Status  
**TENDER**

Auth AP      Date January 2021

**TAYLORDESIGN**  
architects ltd  
30 Manchester Road, Wembley, Cheshire SK9 1BQ  
t: 01625 528151  
e: office@taylor-design.co.uk  
www.taylor-design.co.uk